

HUNTERS®

HERE TO GET *you* THERE

Black A Moor Lodge Risplith, Ripon, North Yorkshire, HG4 3EW

Offers Over £318,950

Property Images



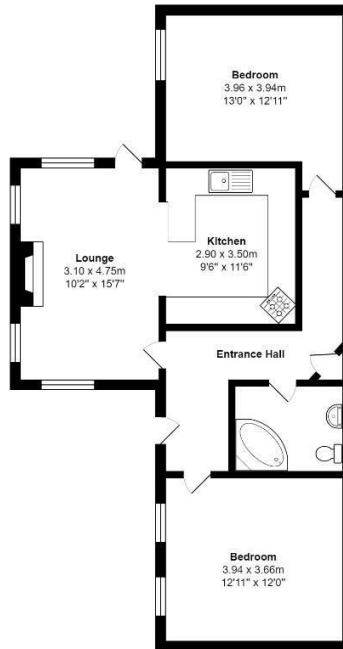
HUNTERS®

HERE TO GET *you* THERE

Property Images



Floorplan



Ground Floor

Total Area: 71.2 m² ... 766 ft²

All measurements are approximate and for display purposes only

EPC

Energy Efficiency Rating		
	Current	Potential
<i>Very energy efficient - lower running costs</i>		
(92 plus) A		
(81-91) B		
(69-80) C		
(55-68) D		
(39-54) E		
(21-38) F		
(1-20) G		
<i>Not energy efficient - higher running costs</i>		
England & Wales	EU Directive 2002/91/EC	

Map



Details

Type: House - Detached Beds: 2 Bathrooms: 1 Receptions: 1 Tenure: Freehold

Summary

A fantastic opportunity to purchase a two double bedroom stone built cottage with accommodation on a ground floor level, tucked away in a private location in Risplith near Ripon.

This beautiful cottage has accommodation on one level, including a lounge, complete with a log burning stove and a floor to ceiling window where you can enjoy stunning countryside views. There is a modern fitted kitchen with integrated appliances and a spacious bathroom suite with corner bath.

Externally there is a garage with garden space next to it, where you could build another garage, subject to the necessary consents. A long sweeping driveway leads to further parking outside the property with parking for multiple vehicles and a paved patio style garden.

This beautiful home is a hidden gem located in a picturesque countryside location, with ease of access by road to Ripon, Harrogate and Pateley Bridge.

Features

• STONE BUILT • DETACHED COTTAGE • TWO DOUBLE BEDROOMS • LOUNGE • FITTED KITCHEN • FITTED BATHROOM SUITE • PATIO GARDEN • DRIVEWAY • GARAGE